

MIDTOWN EXECUTIVE OFFICE

335 East Palm Lane, Suite 201 - Phoenix, Arizona 85006

FOR LEASE



LEASE RATE: Suite 201 - \$35.00

OFFICE SIZE: 1,240 SQUARE FEET

LEASE TYPE: FULL SERVICE

PARKING: COVERED PARKING



- Midtown Executive office suite in historic boutique office building
- Perfect for small businesses
- Suite includes access to high quality common area amenities
- All inclusive: utilities, covered parking, Wi-Fi, Printing, mail room, full kitchen, lobby, conference room
- Excellent location near I-10, Downtown Phx, restaurants and shopping

J.T. Taylor

o: (480) 868-2671 **m:** (480) 225-6484 jt.taylor@orionprop.com

ORION
INVESTMENT REAL ESTATE

FLOOR PLAN

MIDTOWN EXECUTIVE OFFICE

AVAILABLE

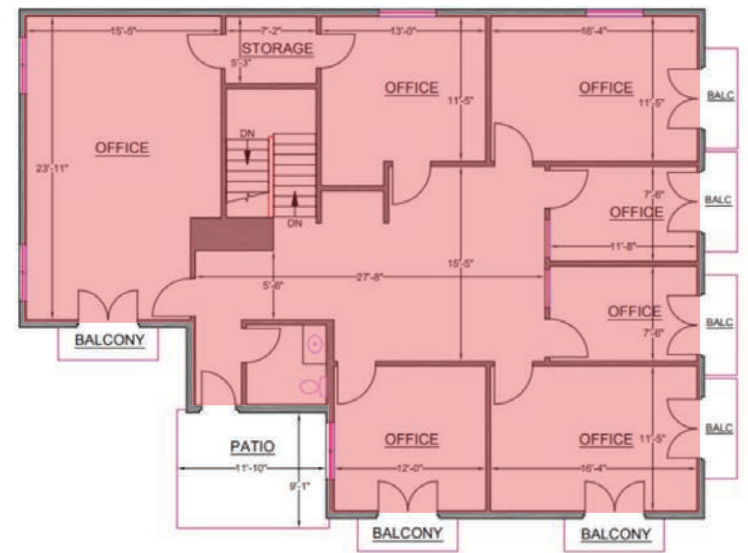
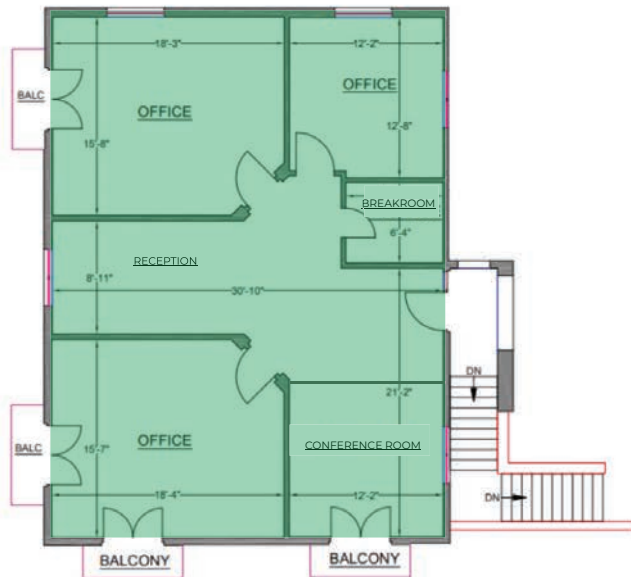
COMMON AREAS

OCCUPIED

FIRST FLOOR



SECOND FLOOR





**A STYLISH OFFICE SPACE JUST MINUTES NORTH OF DOWNTOWN PHOENIX
- PERFECT FOR SMALL BUSINESSES**



DEMOGRAPHICS

1, 3, 5 MILE RADIUS OF SITE



2025 SUMMARY (SitesUSA)	1 Mile	3 Mile	5 Mile
Daytime Population:	64,260	454,460	1,023,153
Residential Population:	22,769	157,344	397,652
2028 Proj. Residential Population:	25,354	162,101	395,915
Average Household Income:	\$113,113	\$93,525	\$103,081
Annual Consumer Expenditures:	\$1.29 B	\$6.73 B	\$15.58 B
Median Age:	34.7	33.7	33.3
Housing Units:	15,147	82,188	180,049
Total Households:	13,317	73,164	160,914

